

ITEM 28. PARKING – PERMIT PARKING – PITT STREET REDFERN

TRIM RECORD NO: 2016/276056

RECOMMENDATION

It is recommended that the Committee endorse the allocation of parking on the western side of Pitt Street, Redfern as follows:

- (A) Between the points 19 metres and 65.9 metres (eight car spaces) north of Phillip Street as “2P 8am-10pm, Permit Holders Excepted, Area 41”.
- (B) Between the points 111.4 metres and 134.7 metres (four car spaces) north of Phillip Street as “2P 8am-10pm, Permit Holders Excepted, Area 41”.
- (C) Between the points 146.8 metres and 158.3 metres (two car spaces) north of Phillip Street as “2P 8am-10pm, Permit Holders Excepted, Area 41”.

VOTING MEMBERS FOR THIS ITEM

<i>Voting Members</i>	<i>Support</i>	<i>Object</i>
City of Sydney		
Roads and Maritime Services		
NSW Police – Redfern LAC		
Representative for the Member for Newtown		

DECISION

BACKGROUND

Residents of Pitt Street have requested consideration of additional permit parking in the street to improve the availability of parking near their homes.

COMMENTS

Parts of the kerb space on the western side of Pitt Street, Redfern between Phillip and Albert Streets are currently unrestricted for parking.

Parking occupancy surveys undertaken in Pitt Street indicate that more than 90% of the spaces are occupied during peak hours. On-site inspections show that parking in Pitt Street is close to capacity and there is a need to provide additional permit spaces to improve resident access to on-street parking.

The proposed changes would limit any vehicle which does not have a permit to 2 hours of parking from 8am to 10pm, every day where the signs are installed. This change would match the restriction already existing on the eastern side of the street.

Residents with an Area 41 parking permit will be exempt from the 2-hour time limit.

A two-hour parking limit is preferred for streets in the inner residential areas as it better balances the long-stay parking needs of permit holders with the needs of all households to use parking for visitors, family, carers and tradespeople.

CONSULTATION

The City consulted local residents and businesses in the area. There were 150 letters sent out with no responses supporting or opposing the proposal.

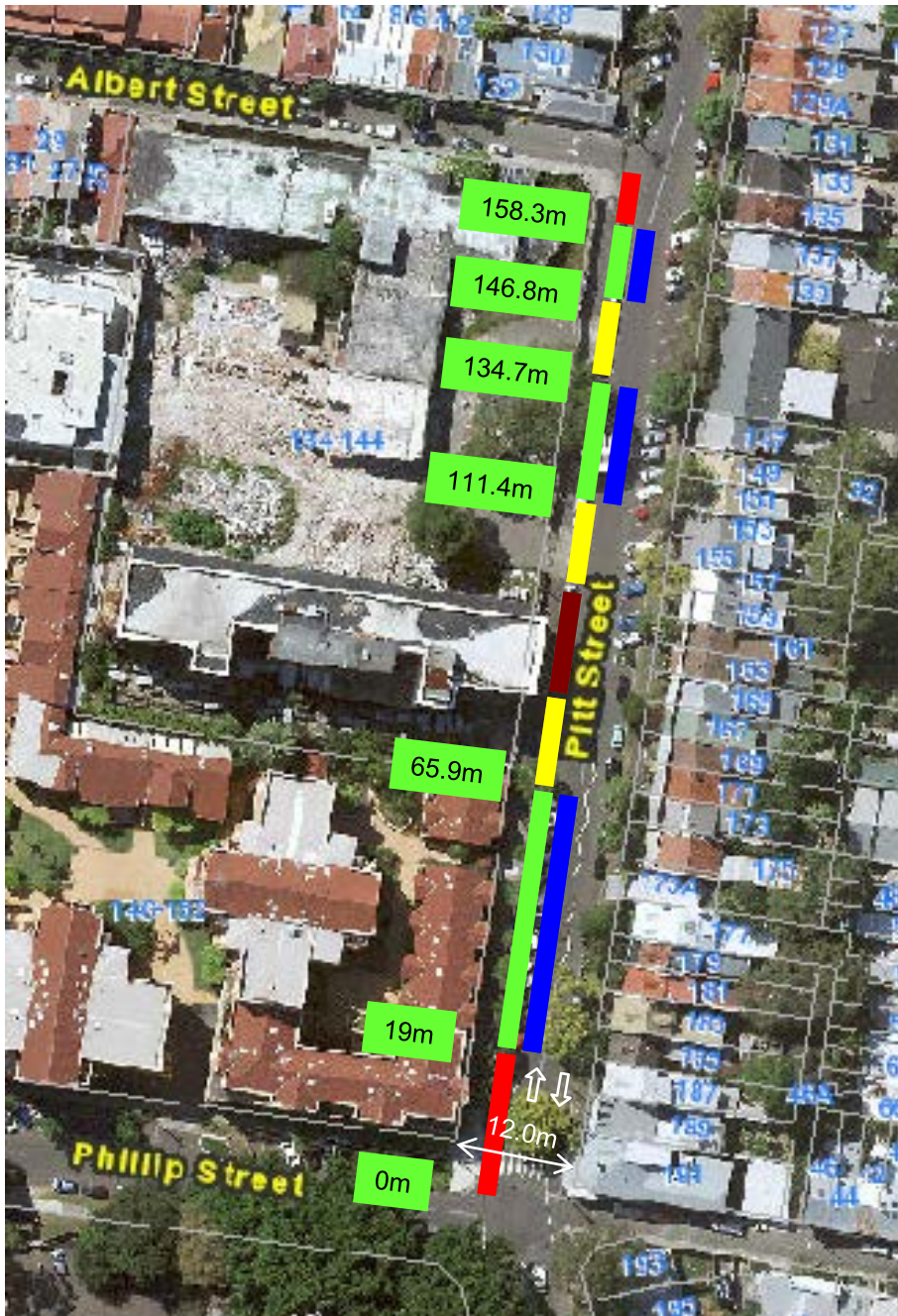
FINANCIAL

Funds are available in the current budget.

ATTACHMENTS

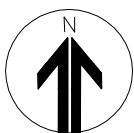
Parking – Permit Parking – Pitt Street Redfern

Michael Rimac, Engineering Traffic Officer



LEGEND:

- Proposed "2P 8am-10pm Permit Holders Excepted Area 41"
- Existing "No Stopping"
- Existing "No Parking"
- Existing "No Parking Authorized Disabled Persons Vehicle Excepted"
- Existing "Unrestricted Parking"



PROPOSAL

**PITT STREET, REDFERN
PERMIT PARKING**

